



Appendix G-4 Part 2 – Consultation Materials: Preliminary Environmental Information Report



Norfolk County Council

GREAT YARMOUTH THIRD RIVER CROSSING

Preliminary Environmental Information Report
Volume II: Figures



Norfolk County Council

GREAT YARMOUTH THIRD RIVER CROSSING

Preliminary Environmental Information Report Volume II:
Figures

TYPE OF DOCUMENT (VERSION) PUBLIC

PROJECT NO. 70046035

OUR REF. NO. GYTRC-WSP-EGN-XX-RP-EN-0002

DATE: AUGUST 2018

WSP
The Forum
Barnfield Road
Exeter, Devon
EX1 1QR
Phone: +44 1392 229 700
Fax: +44 1392 229 701
WSP.com



QUALITY CONTROL

Issue/revision	First issue	Revision 1	Revision 2	Revision 3
Remarks	Draft for client review	Revision A for Issue		
Date	June 2018	02 August 2018		
Prepared by	J. Davey	J. Davey		
Signature				
Checked by	M. Whalley	M. Wood		
Signature				
Authorised by	M. Whalley	M. Wood		
Signature				
Project number	70046035	70046035		
Report number	GYTRC-WSP-EGN-XX-RP-EN-0002/P01	GYTRC-WSP-EGN-XX-RP-EN-0002/A		
File reference	\\uk.wspgroup.com\central data\Projects\62240xxx\62240375 - GYTRC\02 WIP\EI EIA and flood risk\03 Document\00 PEIR\00 PEIR Vol II - Figures			

CONTENTS

PEIR CHAPTER 2: PROPOSED SCHEME

FIGURE 2.1: LOCATION OF THE PROPOSED SCHEME

FIGURE 2.3: RED LINE BOUNDARY FOR THE PROPOSED SCHEME

FIGURE 2.4: PROPOSED SCHEME DRAFT HIGHWAY ARRANGEMENT

FIGURE 2.5: PROPOSED SCHEME DRAFT LAND USE ARRANGEMENT

FIGURE 2.6: BASCULE BRIDGE OPTION 1 - SIMPLE TRUNNION
BASCULE BRIDGE OPTION 1 - SIMPLE TRUNNION

FIGURE 2.6: BASCULE BRIDGE OPTION 1 - SIMPLE TRUNNION CONCEPTUAL
GENERAL ARRANGEMENT

FIGURE 2.7: BASCULE BRIDGE OPTION 2 - SIMPLE TRUNNION CONCEPTUAL
GENERAL ARRANGEMENT

FIGURE 2.8: SOUTHTOWN ROAD BRIDGE CONCEPTUAL GENERAL ARRANGEMENT

FIGURE 2.9: PROPOSED DRAINAGE STRATEGY

PEIR CHAPTER 6: AIR QULAITY

FIGURE 6.1: AIR QULAITY CONSTRUCTION PHASE ASSESSMENT STUDY AREA

FIGURE 6.2: AIR QULAITY OPERATIONAL PHASE ASSESSMENT STUDY AREA

FIGURE 6.3: PASSIVE NO2 MONITORING SITES

PEIR CHAPTER 7: AIR QULAITY

FIGURE 7.1: PROVISIONAL OPERATIONAL NOISE STUDY AREA

FIGURE 7.2: BASELINE NOISE SURVEY MONITORING LOCATIONS

PEIR CHAPTER 8: NATURE CONSERVATION

FIGURE 8.1: NATURE CONSERVATION MAIN STUDY AREA

FIGURE 8.2: NATURE CONSERVATION EXTENDED STUDY AREA

FIGURE 8.3: BAT SURVEY AREA

FIGURE 8.4: WATER VOLE SURVEY AREA

FIGURE 8.5: BIRD SURVEY AREA

FIGURE 8.6: STATUTORY DESIGNATED SITES

PEIR CHAPTER 9: CULTURAL HERITAGE

FIGURE 9.1: DESIGNATED HERITAGE ASSETS

FIGURE 9.2: NON-DESIGNATED HERITAGE ASSETS

FIGURE 9.3: HERITAGE ASSETS AT VMS LOCATIONS

PEIR CHAPTER 10: TOWNSCAPE AND VISUAL IMPACTS

FIGURE 10.1: TVIA PHOTOGRAPHIC VIEWPOINTS

FIGURE 10.2: TVIA PHOTOGRAPHIC VIEWPOINTS

FIGURE 10.3: TVIA STUDY AREA

PEIR CHAPTER 11: ROAD DRAINAGE AND THE WATER ENVIRONMENT

FIGURE 11.1: STUDY AREA FOR THE WATER ENVIRONMENT

PEIR CHAPTER 12: FLOOD RISK

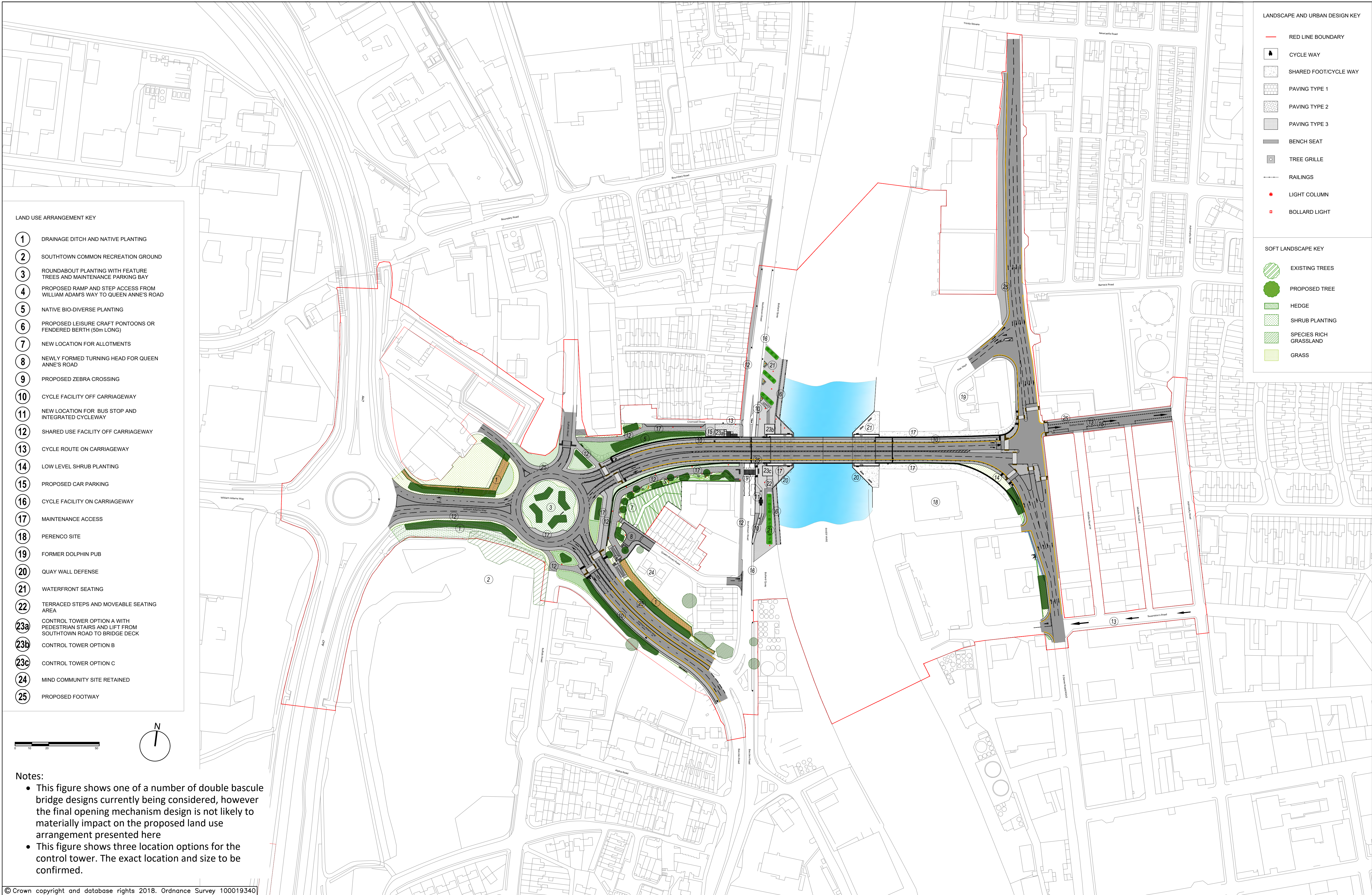
FIGURE 12.1: FLOOD RISK STUDY AREA

FIGURE 12.2: EA FLOOD MAP FOR PLANNING

PEIR CHAPTER 17: TRAFFIC AND TRANSPORT

FIGURE 17.1: STUDY AREA

FIGURE 17.2: COMMUNITY FACILITIES AND CYCLE ROUTES PLAN



- LAND USE ARRANGEMENT KEY
- 1 DRAINAGE DITCH AND NATIVE PLANTING
 - 2 SOUTHTOWN COMMON RECREATION GROUND
 - 3 ROUNDABOUT PLANTING WITH FEATURE TREES AND MAINTENANCE PARKING BAY
 - 4 PROPOSED RAMP AND STEP ACCESS FROM WILLIAM ADAMS WAY TO QUEEN ANNE'S ROAD
 - 5 NATIVE BIO-DIVERSE PLANTING
 - 6 PROPOSED LEISURE CRAFT PONTOONS OR FENDERED BERTH (50m LONG)
 - 7 NEW LOCATION FOR ALLOTMENTS
 - 8 NEWLY FORMED TURNING HEAD FOR QUEEN ANNE'S ROAD
 - 9 PROPOSED ZEBRA CROSSING
 - 10 CYCLE FACILITY OFF CARRIAGEWAY
 - 11 NEW LOCATION FOR BUS STOP AND INTEGRATED CYCLEWAY
 - 12 SHARED USE FACILITY OFF CARRIAGEWAY
 - 13 CYCLE ROUTE ON CARRIAGEWAY
 - 14 LOW LEVEL SHRUB PLANTING
 - 15 PROPOSED CAR PARKING
 - 16 CYCLE FACILITY ON CARRIAGEWAY
 - 17 MAINTENANCE ACCESS
 - 18 PERENCO SITE
 - 19 FORMER DOLPHIN PUB
 - 20 QUAY WALL DEFENSE
 - 21 WATERFRONT SEATING
 - 22 TERRACED STEPS AND MOVEABLE SEATING AREA
 - 23a CONTROL TOWER OPTION A WITH PEDESTRIAN STAIRS AND LIFT FROM SOUTHTOWN ROAD TO BRIDGE DECK
 - 23b CONTROL TOWER OPTION B
 - 23c CONTROL TOWER OPTION C
 - 24 MIND COMMUNITY SITE RETAINED
 - 25 PROPOSED FOOTWAY

- LANDSCAPE AND URBAN DESIGN KEY
- RED LINE BOUNDARY
 - CYCLE WAY
 - SHARED FOOT/CYCLE WAY
 - PAVING TYPE 1
 - PAVING TYPE 2
 - PAVING TYPE 3
 - BENCH SEAT
 - TREE GRILLE
 - RAILINGS
 - LIGHT COLUMN
 - BOLLARD LIGHT

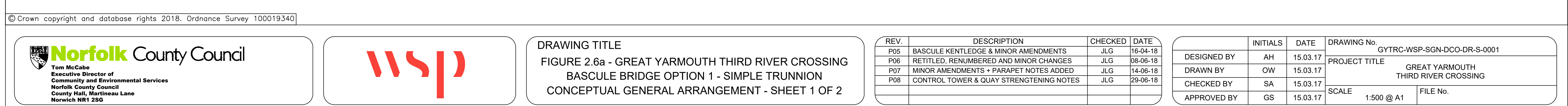
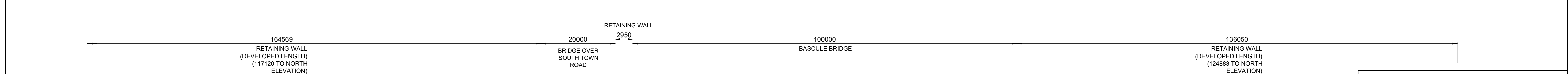
- SOFT LANDSCAPE KEY
- EXISTING TREES
 - PROPOSED TREE
 - HEDGE
 - SHRUB PLANTING
 - SPECIES RICH GRASSLAND
 - GRASS

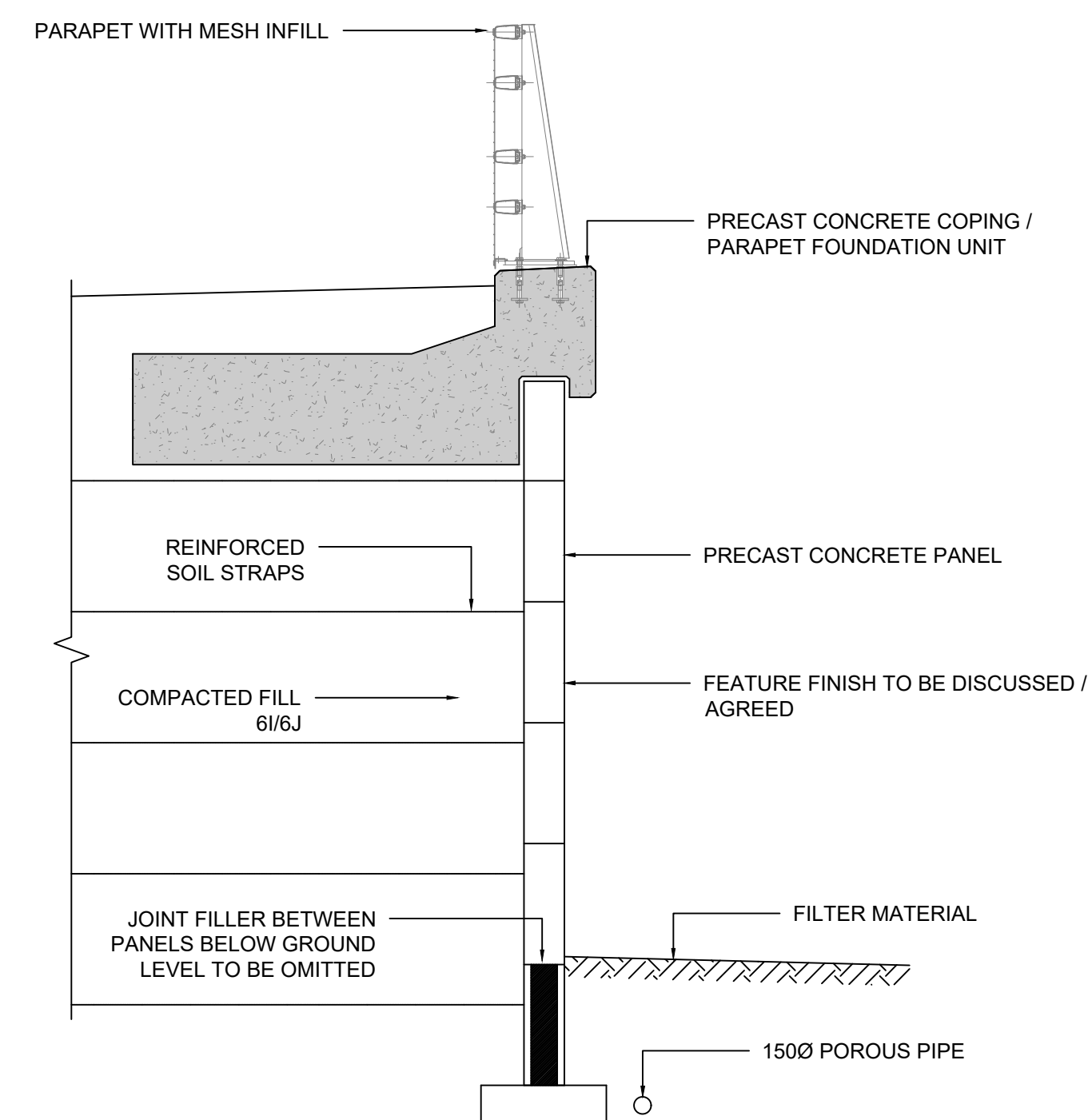
- Notes:
- This figure shows one of a number of double bascule bridge designs currently being considered, however the final opening mechanism design is not likely to materially impact on the proposed land use arrangement presented here
 - This figure shows three location options for the control tower. The exact location and size to be confirmed.

© Crown copyright and database rights 2018. Ordnance Survey 100019340

REV.	DESCRIPTION	CHECKED	DATE
P01	FOR PEIR	MJ	08.06.18
P02	FOR PEIR	MJ	14.06.18
P03	FOR PEIR	MJ	29.06.18
P04	UPDATED CONTROL TOWER LOCATIONS	CN	16.07.18

DESIGNED BY	INITIALS	DATE	DRAWING No.
DESIGNED BY	CN	04.06.18	GYTRC-WSP-ELS-GYTRC-DR-L-1000
DRAWN BY	INITIALS	DATE	PROJECT TITLE
DRAWN BY	CT	28.06.18	GREAT YARMOUTH THIRD RIVER CROSSING
CHECKED BY	INITIALS	DATE	SCALE
CHECKED BY	CN	28.06.18	1:1500 @ A1
APPROVED BY	INITIALS	DATE	FILE No.
APPROVED BY	MJ	28.06.18	1000

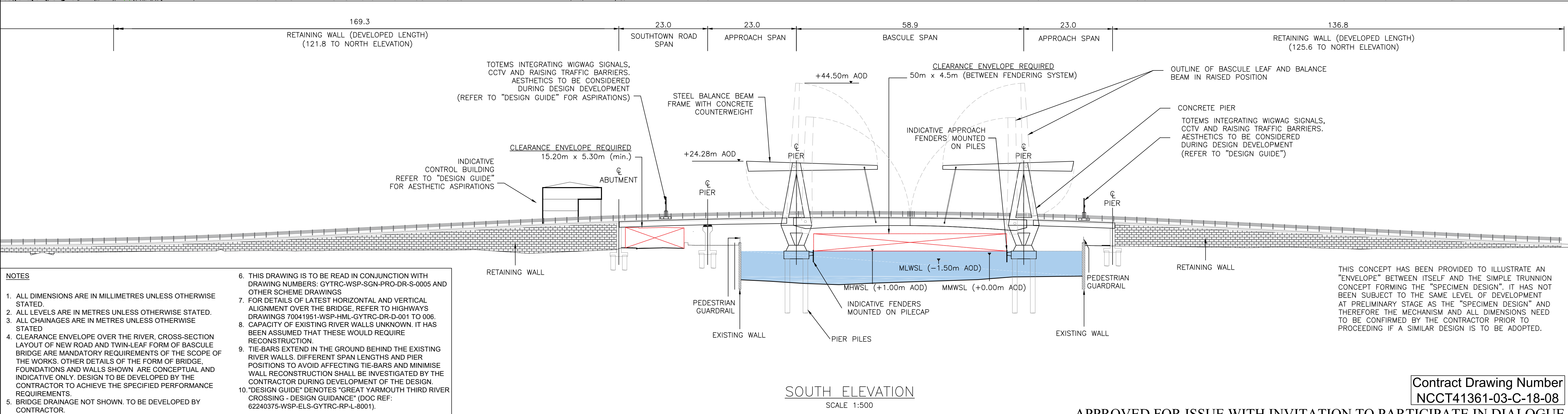
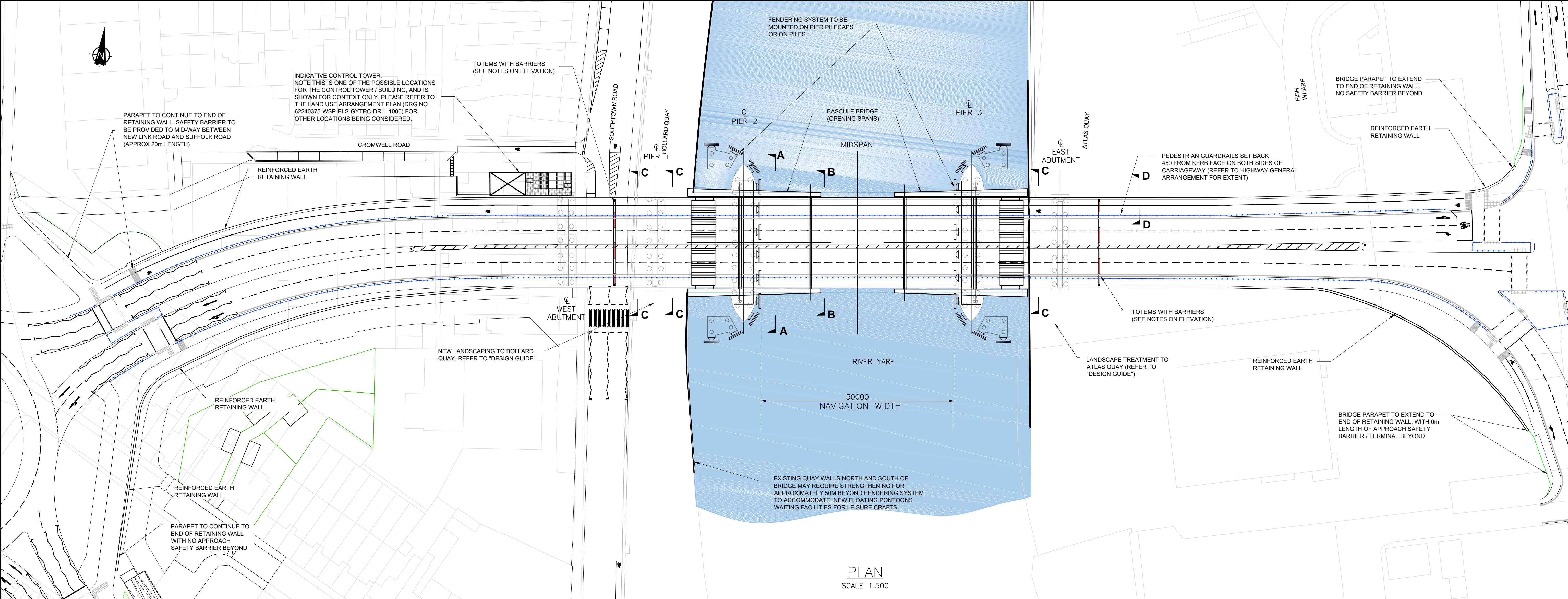




SECTION E-E
SCALE 1:30



- NOTES**
1. ALL DIMENSIONS ARE IN MILLIMETRES UNLESS OTHERWISE STATED.
 2. ALL LEVELS ARE IN METRES UNLESS OTHERWISE STATED.
 3. ALL CHAINAGES ARE IN METRES UNLESS OTHERWISE STATED.
 4. BRIDGE, FOUNDATION AND WALL DETAILS SHOWN ARE INDICATIVE ONLY. TO BE CONFIRMED AND DEVELOPED BY THE CONTRACTOR.
 5. THIS DRAWING IS TO BE READ IN CONJUNCTION WITH DRAWING NUMBERS: GYTRC-WSP-SGN-DCO-DR-S-0001, 0003 AND OTHER SCHEME DRAWINGS.
 6. DRIVING RETITLED AND RENUMBERED AT P03 REMOVING REFERENCE TO OPT32 AND ADOPTING NEW SCHEME NAMING REFERENCE WITH SEPARATE DRAWINGS FOR DCO AND FOR PROCUREMENT.



- NOTES**
1. ALL DIMENSIONS ARE IN MILLIMETRES UNLESS OTHERWISE STATED.
 2. ALL LEVELS ARE IN METRES UNLESS OTHERWISE STATED.
 3. ALL CHAINAGES ARE IN METRES UNLESS OTHERWISE STATED.
 4. CLEARANCE ENVELOPE OVER THE RIVER, CROSS-SECTION LAYOUT OF NEW ROAD AND TWIN-LEAF FORM OF BASCULE BRIDGE ARE MANDATORY REQUIREMENTS OF THE SCOPE OF THE WORKS. OTHER DETAILS OF THE FORM OF BRIDGE, FOUNDATIONS AND WALLS SHOWN ARE CONCEPTUAL AND INDICATIVE ONLY. DESIGN TO BE DEVELOPED BY THE CONTRACTOR TO ACHIEVE THE SPECIFIED PERFORMANCE REQUIREMENTS.
 5. BRIDGE DRAINAGE NOT SHOWN. TO BE DEVELOPED BY CONTRACTOR.
 6. THIS DRAWING IS TO BE READ IN CONJUNCTION WITH DRAWING NUMBERS: GYTRC-WSP-SGN-PRO-DR-S-0005 AND OTHER SCHEME DRAWINGS
 7. FOR DETAILS OF LATEST HORIZONTAL AND VERTICAL ALIGNMENT OVER THE BRIDGE, REFER TO HIGHWAYS DRAWINGS 70041951-WSP-HML-GYTRC-DR-D-001 TO 006.
 8. CAPACITY OF EXISTING RIVER WALLS UNKNOWN. IT HAS BEEN ASSUMED THAT THESE WOULD REQUIRE RECONSTRUCTION.
 9. TIE-BARS EXTEND IN THE GROUND BEHIND THE EXISTING RIVER WALLS. DIFFERENT SPAN LENGTHS AND PIER POSITIONS TO AVOID AFFECTING TIE-BARS AND MINIMISE WALL RECONSTRUCTION SHALL BE INVESTIGATED BY THE CONTRACTOR DURING DEVELOPMENT OF THE DESIGN.
 10. "DESIGN GUIDE" DENOTES "GREAT YARMOUTH THIRD RIVER CROSSING - DESIGN GUIDANCE" (DOC REF: 62240375-WSP-ELS-GYTRC-RP-L-8001).

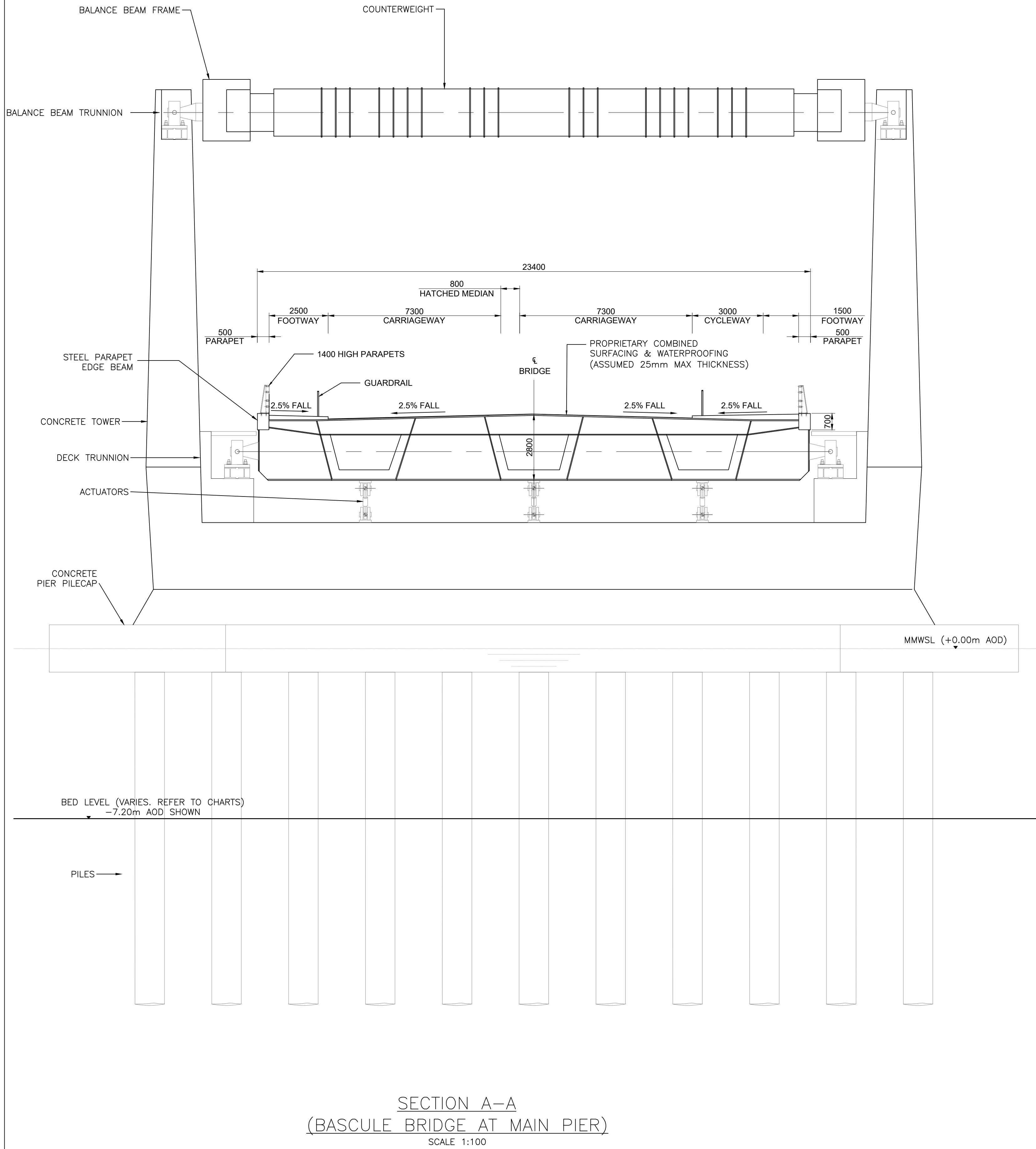
THIS CONCEPT HAS BEEN PROVIDED TO ILLUSTRATE AN "ENVELOPE" BETWEEN ITSELF AND THE SIMPLE TRUNNION CONCEPT FORMING THE "SPECIMEN DESIGN". IT HAS NOT BEEN SUBJECT TO THE SAME LEVEL OF DEVELOPMENT AT PRELIMINARY STAGE AS THE "SPECIMEN DESIGN" AND THEREFORE THE MECHANISM AND ALL DIMENSIONS NEED TO BE CONFIRMED BY THE CONTRACTOR PRIOR TO PROCEEDING IF A SIMILAR DESIGN IS TO BE ADOPTED.

Contract Drawing Number
NCCT41361-03-C-18-08

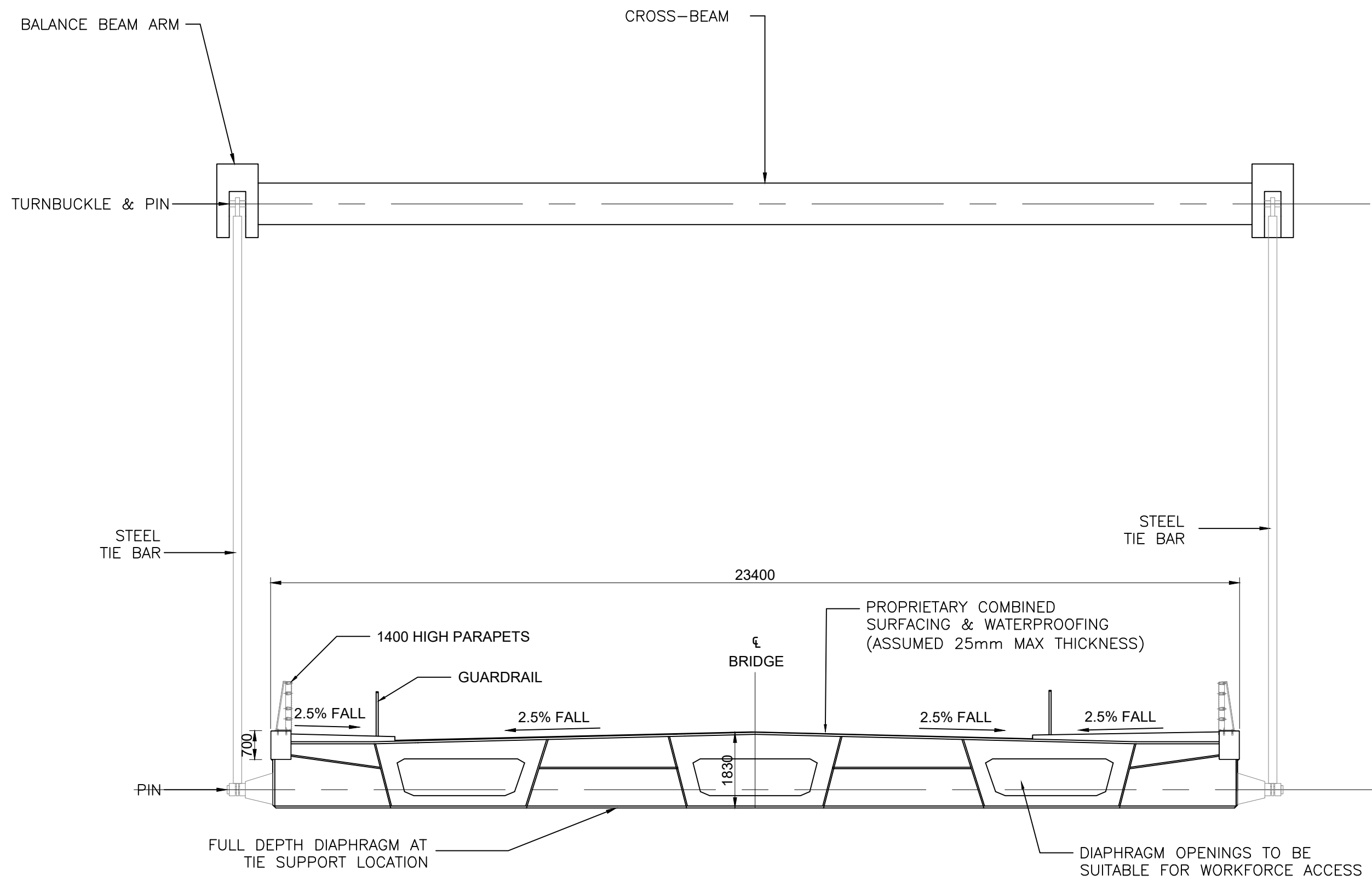
© Crown copyright and database rights 2018. Ordnance Survey 100019340

REV.	DESCRIPTION	CHECKED	DATE
P01	INITIAL ISSUE	JLG	07-06-18
P02	MINOR AMENDMENTS + PARAPET NOTES ADDED	JLG	15-06-18
P03	FENDERS AMENDED + REVISIONS TO NOTES	JLG	13-07-18

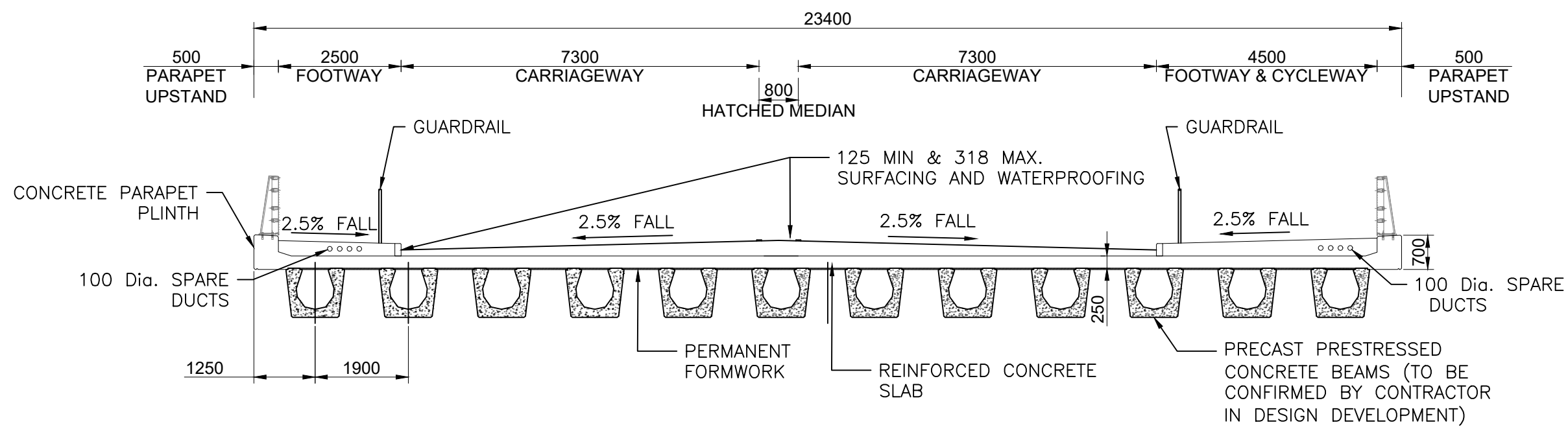
DESIGNED BY	INITIALS	DATE	DRAWING No.
JLG	JLG	05.06.18	GYTRC-WSP-SGN-PRO-DR-S-0004
DRAWN BY	INITIALS	DATE	PROJECT TITLE
CE	CE	05.06.18	GREAT YARMOUTH THIRD RIVER CROSSING
CHECKED BY	INITIALS	DATE	SCALE
JLG	JLG	07.06.18	1:500 @ A1
APPROVED BY	INITIALS	DATE	FILE No.
BD	BD	07.06.18	



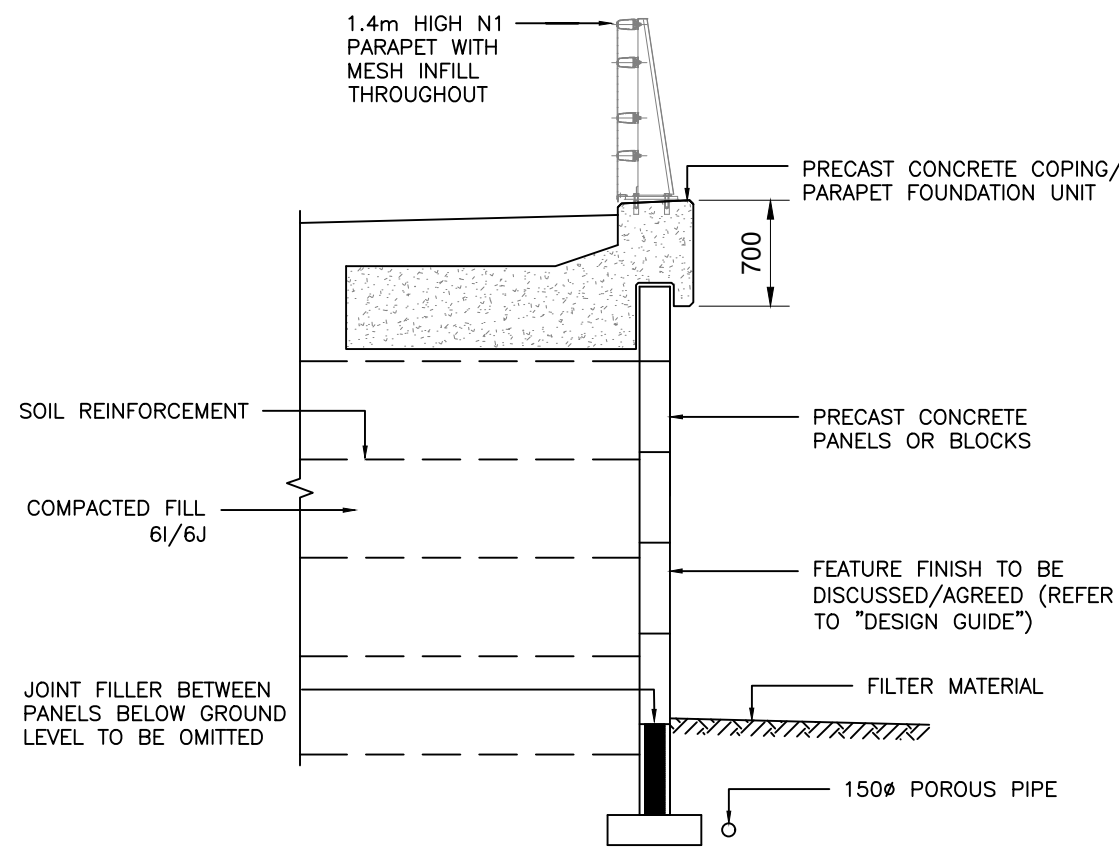
SECTION A-A
(BASCULE BRIDGE AT MAIN PIER)
SCALE 1:100



SECTION B-B
(BASCULE BRIDGE AT TIE SUPPORT)
SCALE 1:100



SECTION C-C
(APPROACH & SOUTHTOWN ROAD SPANS)
SCALE 1:100



SECTION D-D
(TYPICAL SECTION THROUGH
REINFORCED EARTH WALLS)
SCALE 1:50

- NOTES**
1. ALL DIMENSIONS ARE IN MILLIMETRES UNLESS OTHERWISE STATED.
 2. ALL LEVELS ARE IN METRES UNLESS OTHERWISE STATED.
 3. ALL CHAINAGES ARE IN METRES UNLESS OTHERWISE STATED.
 4. CLEARANCE ENVELOPE OVER THE RIVER, CROSS-SECTION LAYOUT OF NEW ROAD AND TWIN-LEAF FORM OF BASCULE BRIDGE ARE MANDATORY REQUIREMENTS OF THE SCOPE OF THE WORKS. OTHER DETAILS OF THE FORM OF BRIDGE, FOUNDATIONS AND WALLS SHOWN ARE CONCEPTUAL AND INDICATIVE ONLY. DESIGN TO BE DEVELOPED BY THE CONTRACTOR TO ACHIEVE THE SPECIFIED PERFORMANCE REQUIREMENTS.
 5. THIS DRAWING IS TO BE READ IN CONJUNCTION WITH DRAWING NUMBERS: GYTRC-WSP-SGN-PRO-DR-S-0004 AND OTHER SCHEME DRAWINGS. IN PARTICULAR, NOTE THE COMMENT ON DRAWING DR-S-0004 ON THE ILLUSTRATIVE NATURE OF THIS CONCEPT IN COMPARISON TO THE 'SPECIMEN DESIGN'.
 6. "DESIGN GUIDE" DENOTES "GREAT YARMOUTH THIRD RIVER CROSSING - DESIGN GUIDANCE" DOC REF 62240375-WSP-ELS-GYTRC-RP-L-8001
 7. SEPARATE DRAWINGS NOW PRODUCED FOR DCO AND FOR PROCUREMENT, DENOTED BY "PRO" OR "DCO" IN DRAWING NO.
 8. BRIDGE DRAINAGE NOT SHOWN. TO BE DEVELOPED BY CONTRACTOR.

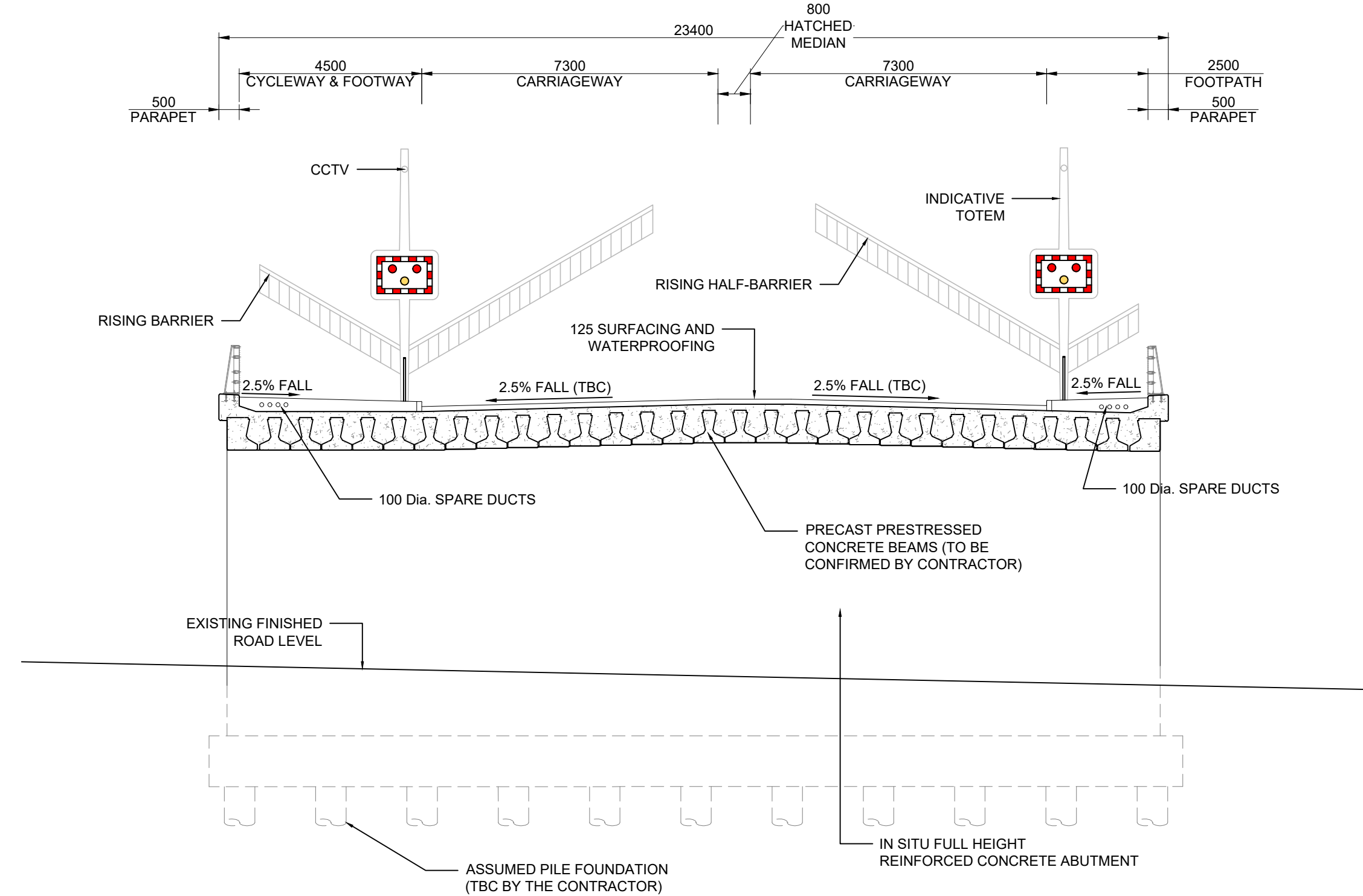
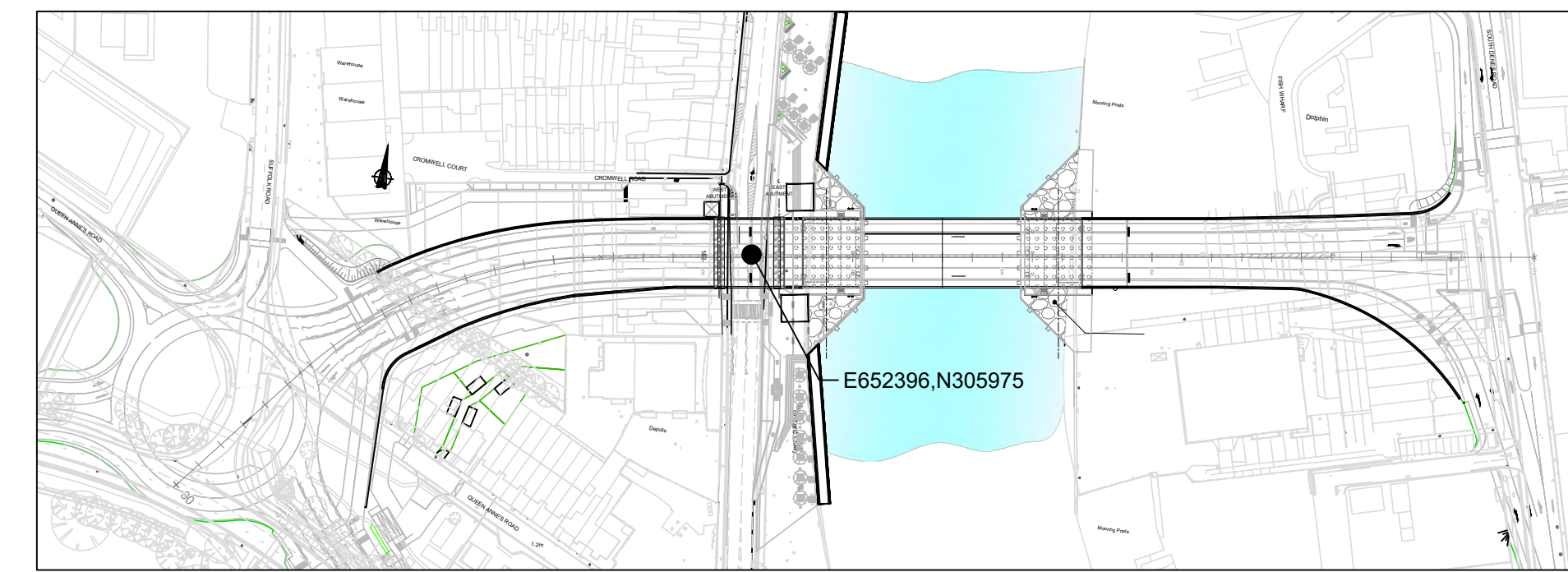
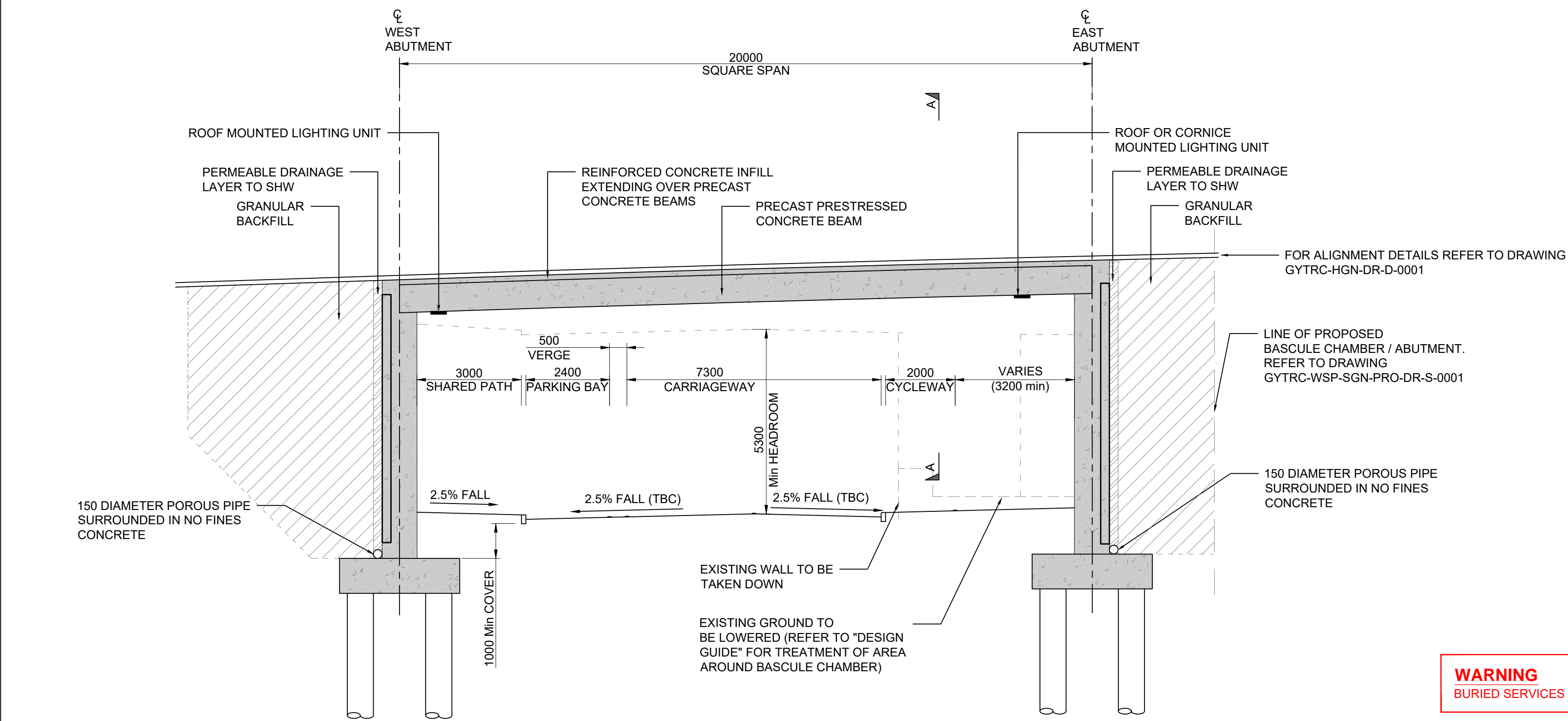
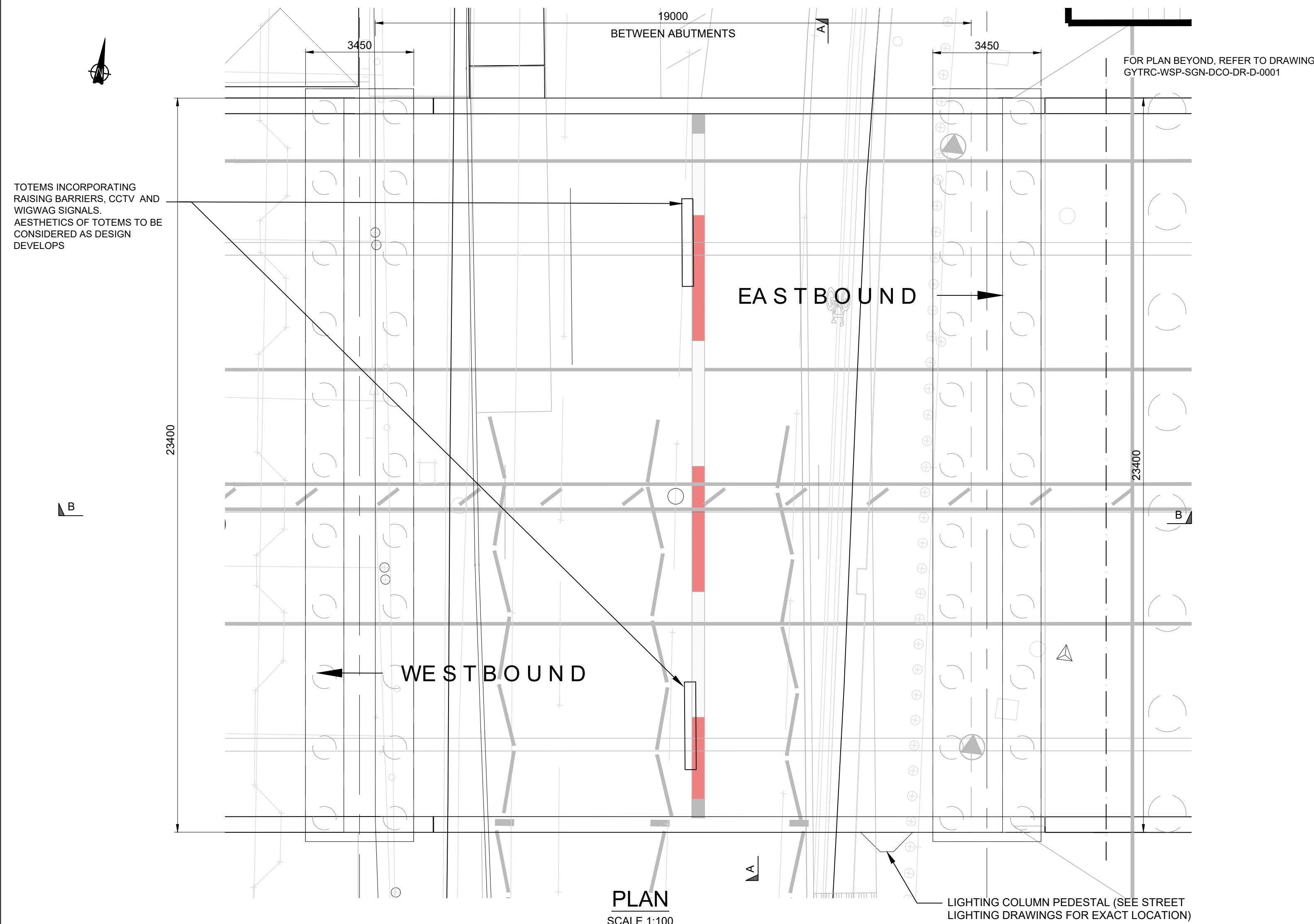
Contract Drawing Number
NCCT41361-03-C-18-09

© Crown copyright and database rights 2018. Ordnance Survey 100019340

REV.	DESCRIPTION	CHECKED	DATE
P01	INITIAL ISSUE	JLG	07-06-18
P02	NOTES AMENDED + "PRO" ADDED TO DRG NO	JLG	13-07-18

APPROVED FOR ISSUE WITH INVITATION TO PARTICIPATE IN DIALOGUE

DESIGNED BY	INITIALS	DATE	DRAWING No.
JLG	JLG	05.06.18	GYTRC-WSP-SGN-PRO-DR-S-0005
DRAWN BY	INITIALS	DATE	PROJECT TITLE
CE	CE	05.06.18	GREAT YARMOUTH THIRD RIVER CROSSING
CHECKED BY	INITIALS	DATE	SCALE
JLG	JLG	07.06.18	1:500 @ A1
APPROVED BY	INITIALS	DATE	FILE No.
BD	BD	07.06.18	



- NOTES
1. ALL DIMENSIONS ARE IN MILLIMETRES UNLESS OTHERWISE STATED.
 2. ALL LEVELS ARE IN METRES UNLESS OTHERWISE STATED.
 3. ALL CHAINAGES ARE IN METRES UNLESS OTHERWISE STATED
 4. WITH EXCEPTION OF CLEARANCE ENVELOPE AND LAYOUT OF NEW LINK ROAD ABOVE THE CROSSING, WHICH ARE REQUIREMENTS OF THE SCOPE OF THE CONTRACT, DETAILS SHOWN INCLUDING BRIDGE, FOUNDATIONS AND WALL DETAILS ARE CONCEPTUAL ONLY. DESIGN TO BE DEVELOPED BY THE CONTRACTOR TO ACHIEVE THE SPECIFIED PERFORMANCE SPECIFICATION.
 5. THIS DRAWING IS TO BE READ IN CONJUNCTION WITH DRAWING NUMBERS: GYTRC-WSP-SGN-DCO-DR-S-0001, 0002 AND OTHER SCHEME DRAWINGS
 6. DRAWING RENUMBERED AT P02 FROM 1076653-WSP-SGN-OPT32-DR-S-0003 TO SUIT UPDATED SCHEME DRAWING NUMBERING WITH SEPARATE DRAWINGS FOR DCO AND FOR PROCUREMENT

WARNING
BURIED SERVICES ARE PRESENT BUT NOT SHOWN.

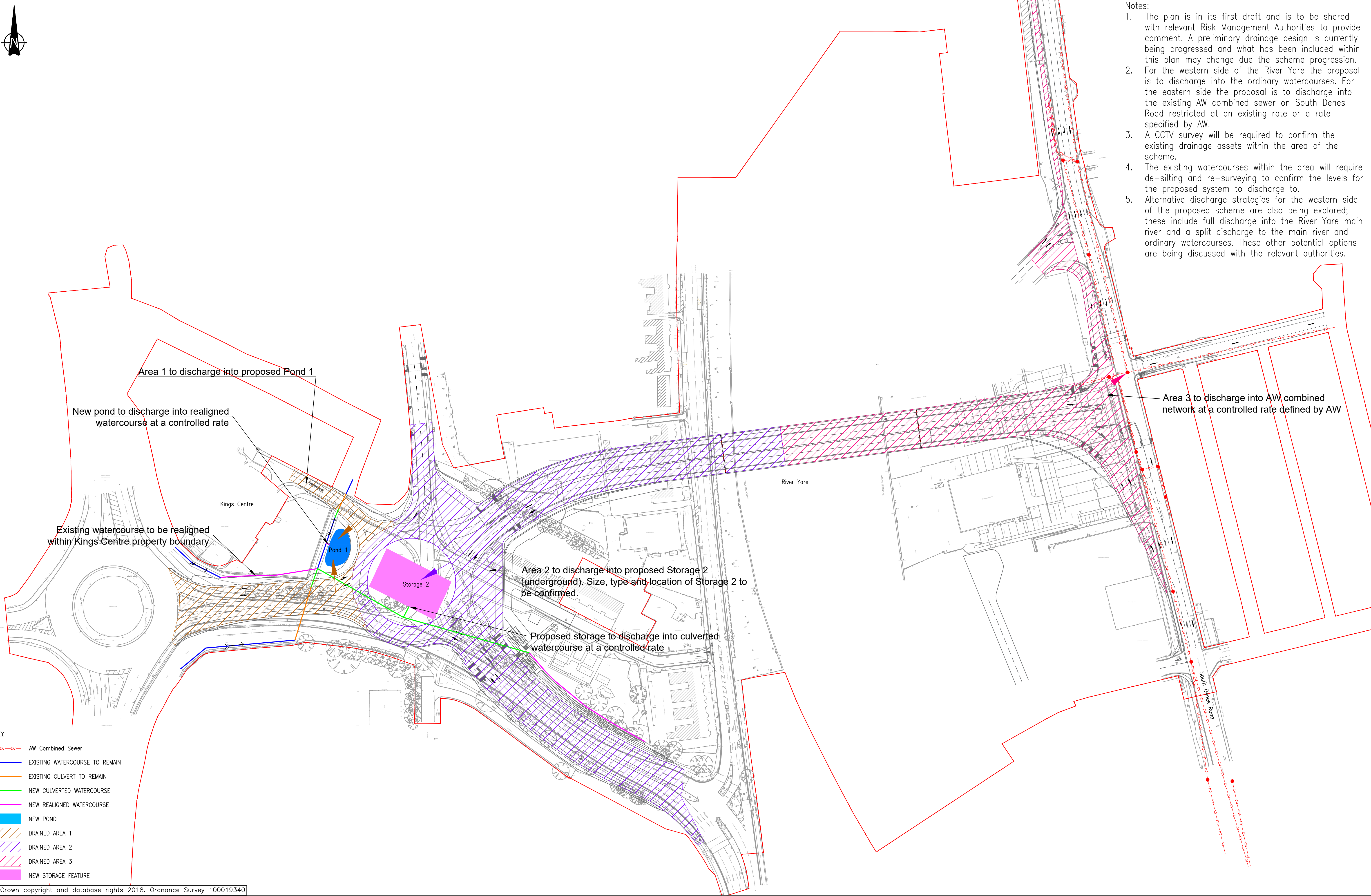
© Crown copyright and database rights 2018. Ordnance Survey 100019340

REV.	DESCRIPTION	CHECKED	DATE
P01	FIRST ISSUE	JLG	30-04-18
P02	SOUTHTOWN RD AMENDED; DRG RENUMBERED	JLG	08-06-18
P03	MINOR AMENDMENTS TO ACCOMPANY PEIR ISSUE	JLG	15-06-18

	INITIALS	DATE	DRAWING No. GYTRC-WSP-SGN-DCO-DR-S-0003	
DESIGNED BY	AH	30-04-18	PROJECT TITLE GREAT YARMOUTH THIRD RIVER CROSSING	
DRAWN BY	ON	30-04-18		
CHECKED BY	JLG	30-04-18		
APPROVED BY	BD	30-04-18	SCALE 1:500 @ A1	FILE No.



- Notes:
1. The plan is in its first draft and is to be shared with relevant Risk Management Authorities to provide comment. A preliminary drainage design is currently being progressed and what has been included within this plan may change due the scheme progression.
 2. For the western side of the River Yare the proposal is to discharge into the ordinary watercourses. For the eastern side the proposal is to discharge into the existing AW combined sewer on South Denes Road restricted at an existing rate or a rate specified by AW.
 3. A CCTV survey will be required to confirm the existing drainage assets within the area of the scheme.
 4. The existing watercourses within the area will require de-silting and re-surveying to confirm the levels for the proposed system to discharge to.
 5. Alternative discharge strategies for the western side of the proposed scheme are also being explored; these include full discharge into the River Yare main river and a split discharge to the main river and ordinary watercourses. These other potential options are being discussed with the relevant authorities.

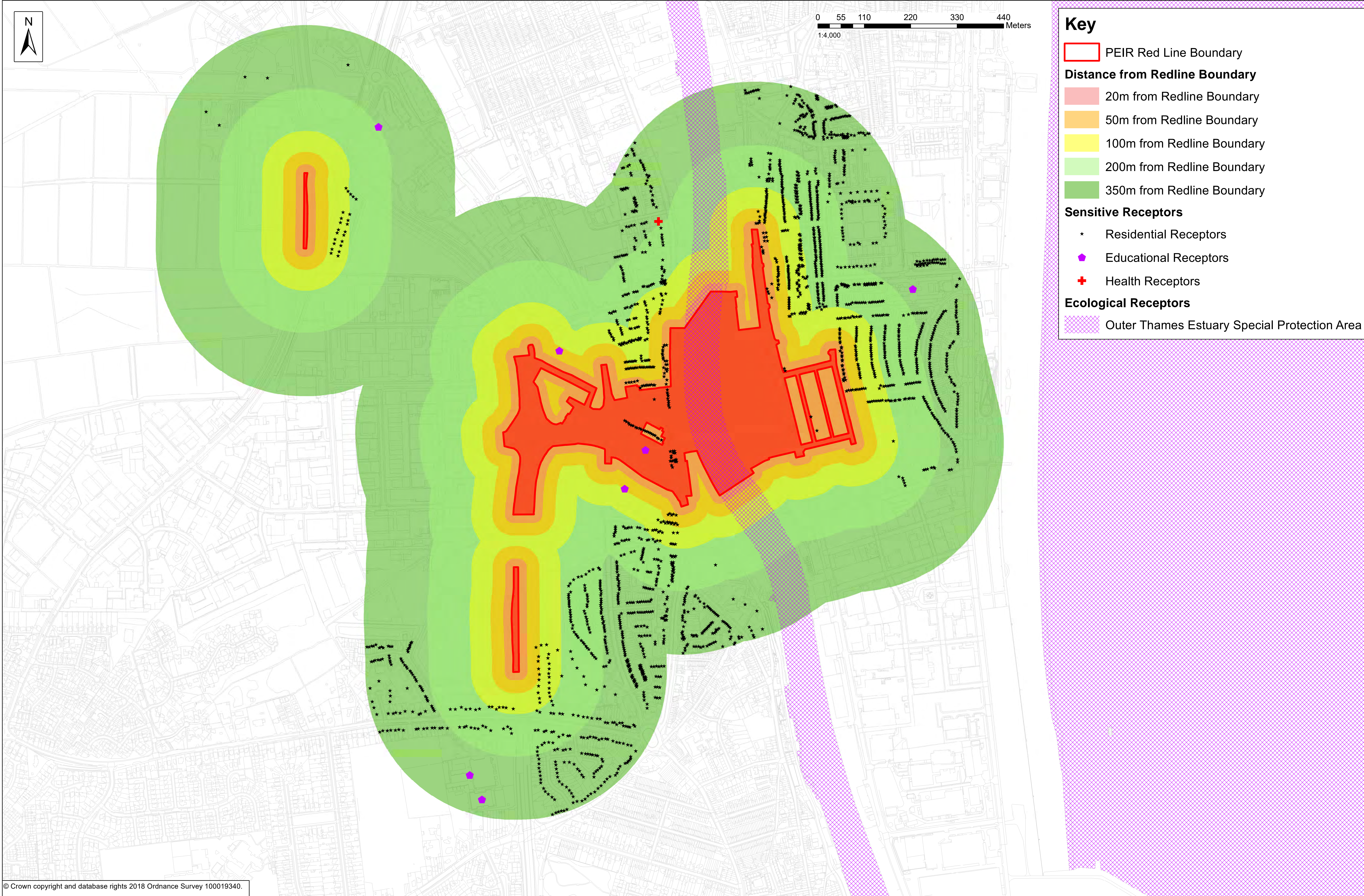


- KEY
- AW Combined Sewer
 - EXISTING WATERCOURSE TO REMAIN
 - EXISTING CULVERT TO REMAIN
 - NEW CULVERTED WATERCOURSE
 - NEW REALIGNED WATERCOURSE
 - NEW POND
 - DRAINED AREA 1
 - DRAINED AREA 2
 - DRAINED AREA 3
 - NEW STORAGE FEATURE

© Crown copyright and database rights 2018. Ordnance Survey 100019340

REV.	DESCRIPTION	CHECKED	DATE
A	Title amended	RJW	06/18
B	RLB added	RJW	06/18
C	Border amended	RJW	06/18
D	Figure number added	RJW	08/18

DESIGNED BY	INITIALS	DATE	DRAWING No.
RJW	RJW	03.18	GYTRC-WSP-HDG-XX-DR-D-0007
DRAWN BY	INITIALS	DATE	PROJECT TITLE
RJW	RJW	03.18	GREAT YARMOUTH THIRD RIVER CROSSING
CHECKED BY	INITIALS	DATE	SCALE
RFS	RFS	03.18	1:1000 @ A1
APPROVED BY	INITIALS	DATE	FILE No.
SG	SG	03.18	0007



© Crown copyright and database rights 2018 Ordnance Survey 100019340.

REV.	DESCRIPTION	CHECKED	DATE
A	INITIAL ISSUE	JD	19/07/18

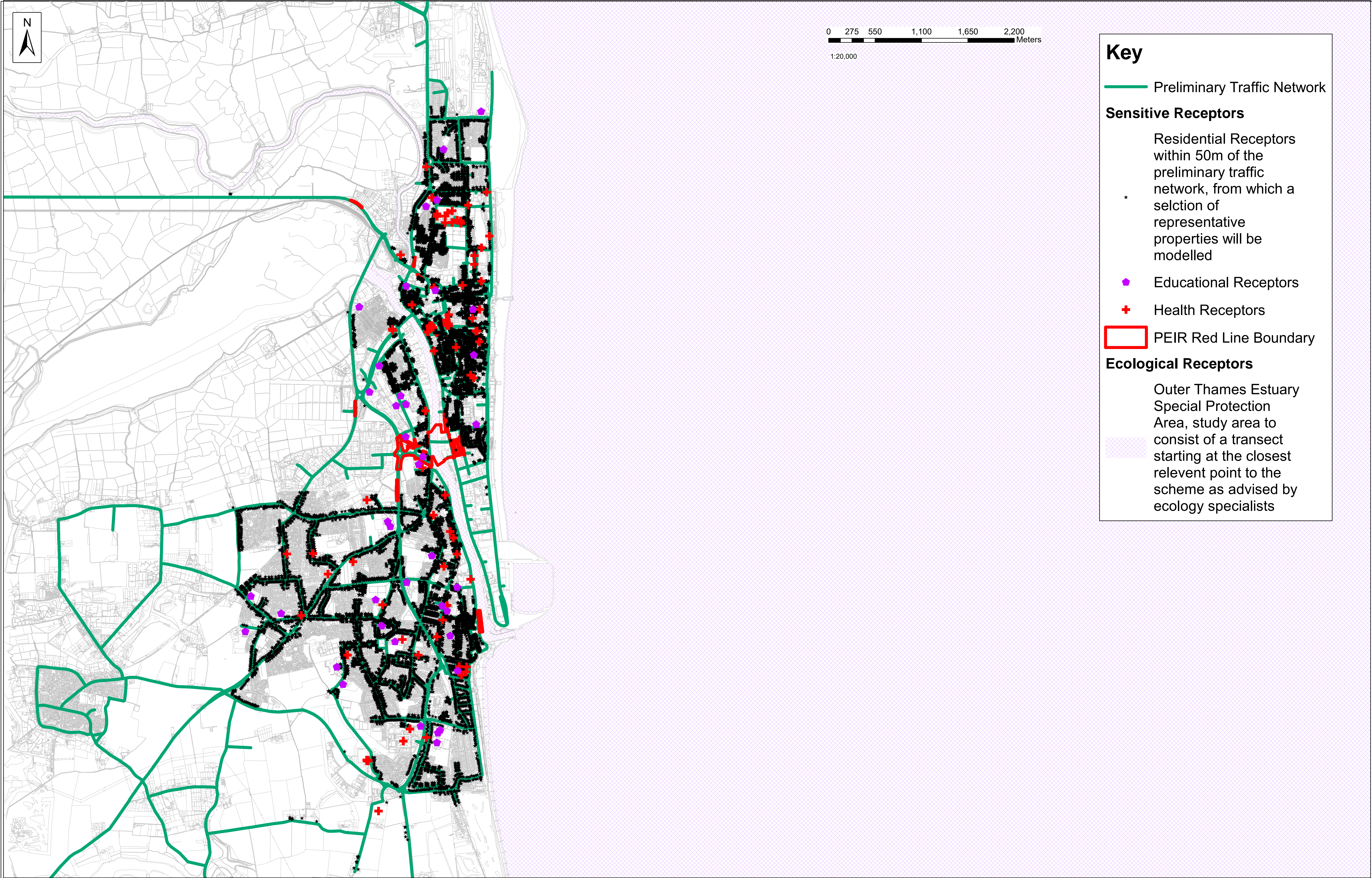
DESIGNED BY	INITIALS	DATE	DRAWING No.
CL	CL	19/07/2018	GYTRC-WSP-EAU-XX-DR-EN-0001
DRAWN BY	INITIALS	DATE	PROJECT TITLE
CL	CL	19/07/2018	GREAT YARMOUTH THIRD RIVER CROSSING
CHECKED BY	INITIALS	DATE	SCALE
JD	JD	19/07/2018	1:4,000@ A1
APPROVED BY	INITIALS	DATE	FILE No.
JD	JD	19/07/2018	



© Crown copyright and database rights 2018 Ordnance Survey 100019340.

REV.	DESCRIPTION	CHECKED	DATE
A	INITIAL ISSUE	JD	19/07/18

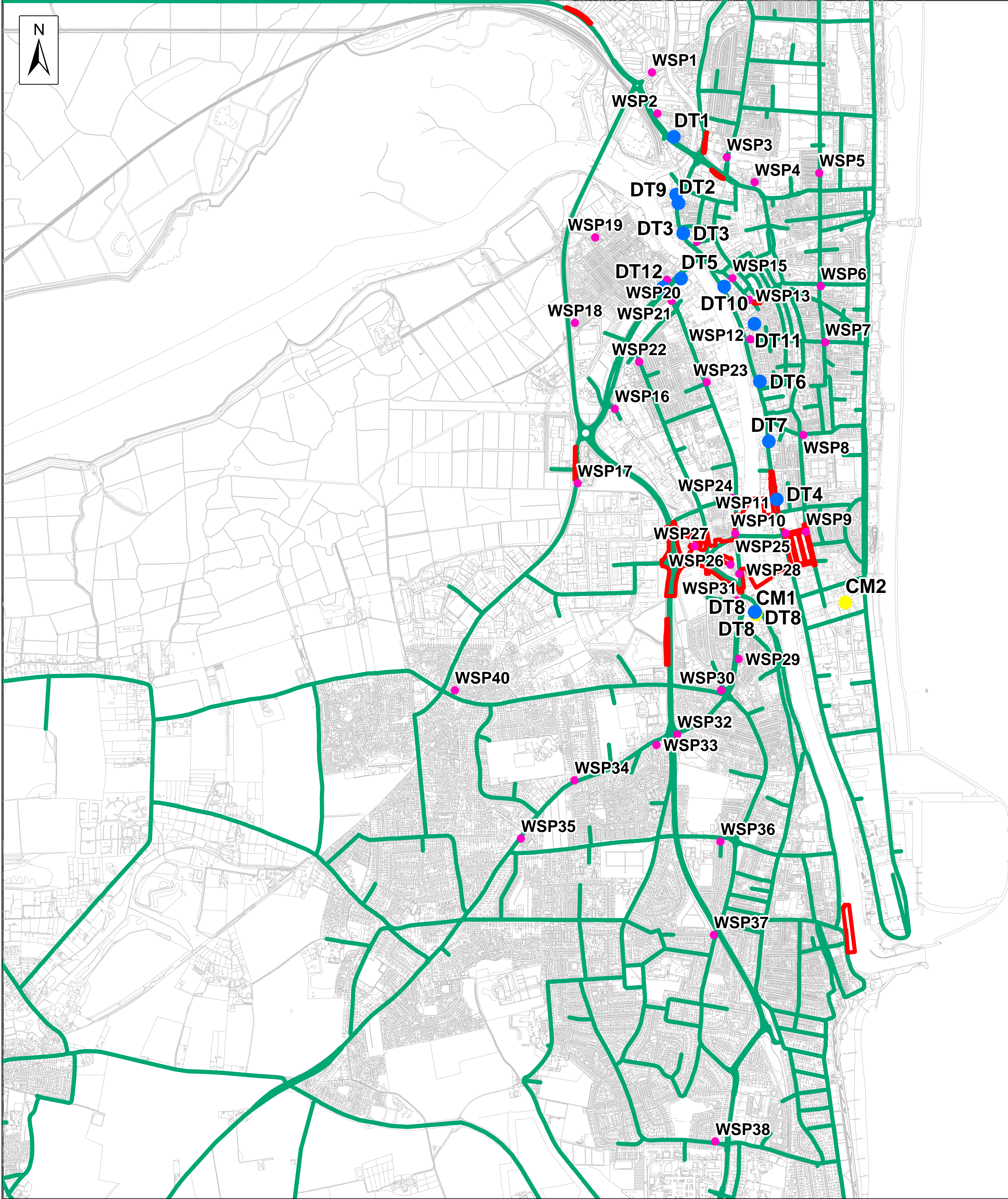
DESIGNED BY	INITIALS	DATE	DRAWING No.
CL	CL	19/07/2018	GYTRC-WSP-EAU-XX-DR-EN-0004
DRAWN BY	INITIALS	DATE	PROJECT TITLE
CL	CL	19/07/2018	GREAT YARMOUTH THIRD RIVER CROSSING
CHECKED BY	INITIALS	DATE	SCALE
JD	JD	19/07/2018	1:5,000@ A1
APPROVED BY	INITIALS	DATE	FILE No.
JD	JD	19/07/2018	



© Crown copyright and database rights 2018 Ordnance Survey 100019340.

REV.	DESCRIPTION	CHECKED	DATE
	INITIAL ISSUE	JD	14/06/2018

	INITIALS	DATE	DRAWING No.
DESIGNED BY	CL	18/07/2018	GYTRC-WSP-EAU-XX-DR-EN-0002
DRAWN BY	CL	18/07/2018	PROJECT TITLE
CHECKED BY	JD	18/07/2018	GREAT YARMOUTH THIRD RIVER CROSSING
APPROVED BY	JD	18/07/2018	SCALE 1:20,000 @ A1
			FILE No.



Key

PEIR Red Line Boundary

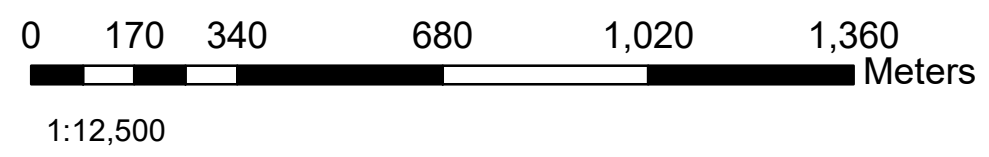
Preliminary Traffic Network

Air Quality Monitoring Sites

GYBC Continuous Monitor

GYBC NO₂ Diffusion Tube

WSP Scheme Specific NO₂ Diffusion Tube



© Crown copyright and database rights 2018 Ordnance Survey 100019340.